

Porcelain

Allure

The Secret of Radiance

AZELOGLICINA®

Azeloglicina is the result of the acylation reaction between the azelaic acid and glycine. It addresses **uneven skin tone** and **dark spots**, preventing melanin production and significantly improve **skin brightness**.

Along its high whitening properties, it has also a **sebum normalizing, hydrating** and **elasticizing** effect. Completely water soluble and self-preserving, it is recommended for impure skins and to counteract melanic spots and uneven complexion.

- **Glowing and even complexion**
- **Purifying properties**
- **Both prevents and reduces dark spots**
- **Skin Perfectionist**



Sinerga
SKIN EVOLUTION

INCI NAME

Potassium Azeloyl Diglycinate

EFFICACY TESTS

IN VITRO:

- 50% Tyrosinase activity after 15'
- 15.93% melanin production after 15':

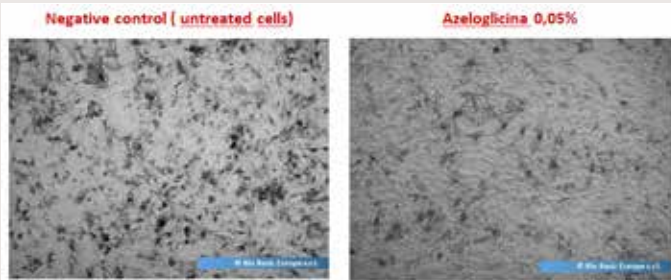


Figure 1: Morphological analysis at bright field microscope of melanocytes treated or not with Azeloglicina

IN VIVO:

- +5.4% Luminance on Caucasian skin
- +5.3% skin radiance on Asian skin:

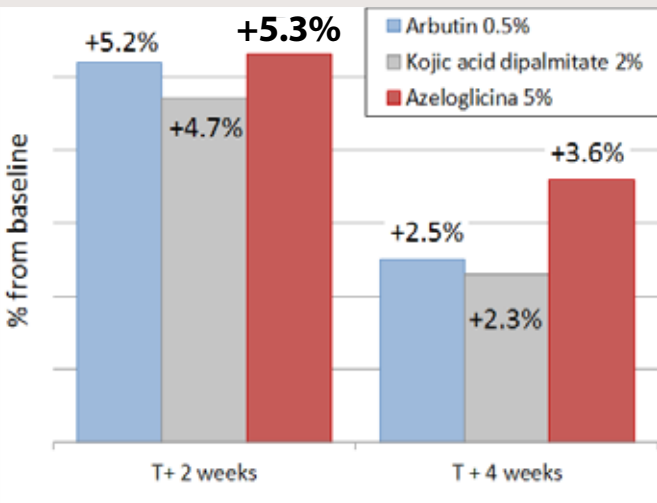


Figure 2: Skin radiance (ITA°) on Asian skin comparing Azeloglicina 5% (active substance is 1.5%), Arbutin 0.5% and Kojic acid dipalmitate 2%.

- 10% face dark spots after 56 days:

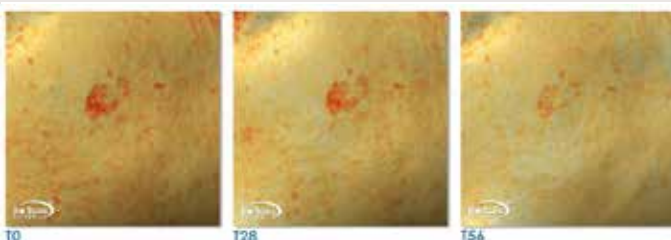


Figure 3: Face dark spot reduction after 28 and 56 days, measured with a melanin filter (Miravex Antera 3D).

- +12.7% hydration
- +2.5% elasticity
- 31.5% sebum production

SPECIFICATIONS

- Appearance: clear liquid
- Color: colorless to light yellow
- Odor: characteristic
- pH: 7.0 - 8.0
- Suggested Dosage: 3 - 10%

COSMETIC APPLICATION

Skin lightening and whitening products, anti-aging treatments, hydrating and elasticizing creams, glowing and evenness-enhancing skincare, make-up and mature skins products.

ILLUMINATING BB CREAM

LSIN 7048

INGREDIENTS	PHASE	%
Water	A	61,87
Disodium EDTA		0,10
Sodium Benzoate		0,40
Panthenol		0,20
Xanthan Gum		0,30
Polysorbate 20		2,00
Mica (and) Titanium Dioxide (and) Iron Oxides	A'	2,50
Titanium Dioxide		1,00
Phytocream® 2000 (Potassium Palmitoyl Hydrolyzed Wheat Protein, Glycerol Stearate, Cetearyl Alcohol)	B	10,00
Dicaprylyl Ether		7,00
Cetearyl Isononanoate		7,00
Tocopheryl Acetate m.f.		0,10
Dimethicone	C	1,00
AZELOGLICINA® (Potassium Azeloyl Diglycinate)	D	5,00
Tri-Solve® (Ceramide NS, Trehalose, Cholesterol, Hydrogenated Lecithin)		0,20
Fenicap (Phenylpropanol (and) Caprylyl Glycol)		0,90
Lactic Acid sol. 90%	E	0,22
Parfume	F	0,20

CHARACTERISTICS

- Aspect: Semi-consistent emulsion
- Color: Beige
- Odor: Characteristics
- pH: 5.5
- Viscosity with Brookfield: 12'640 mPas

METHOD

Add phase A and heat at 65°, dispersing the powders under homogenizer. Under fast stirring, add phase B (pre-heated at 65°), until it forms a homogeneous system. At 50° add C, then cool down at 30° and add the remaining phases (D and F). Adjust the pH with E until the desired value.