



Easing Beauty

Pure stress relief

DOLCÉVIA®

Dolcévia® is the ultimate natural and pure active ingredient from the leaves of *Stevia rebaudiana*, with a proven **de-contracting** effect on **involuntary muscle tension**.

Thanks to its activity, skin is **smoother** and **plumped** while wrinkles and fine lines are reduced, for a serene and youthful appearance.

- Skin yoga
- Decontracting effect on muscles
- Natural de-stressing
- Soft-ageing



Sinerga
SKIN EVOLUTION

SPECIFICATIONS

Appearance: powder
Colour: white
Assay (HPLC): > 99.0 (steviol glycosides)
Loss on Drying (105 °C, 2h): < 5.0%
Suggested Dosage: 0.3 – 0.5%



INCI NAME

Stevioside



MAIN APPLICATIONS

De-stressing skincare for face, neck and decollété, soft-aging treatments, make-up base.



EFFICACY TESTS*

IN VITRO

Reduction of the involuntary contractions of face muscles (by evaluating the increase of acetylcholinesterase enzymatic activity)

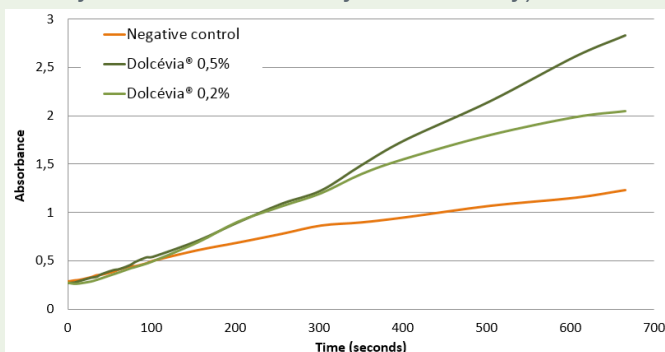


Figure 1: In vitro evaluation of the increase of acetylcholinesterase enzymatic activity by Dolcévia, which leads to the reduction of the involuntary contractions of face muscles.

IN VIVO

- 17% wrinkles' depth
- 14% roughness
- 14% wrinkles' height

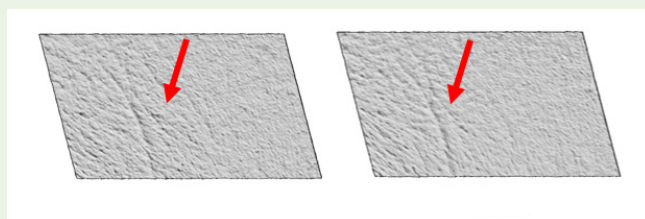
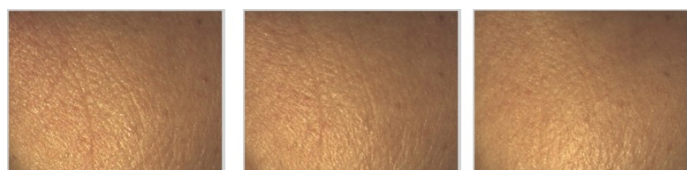


Figure 2: Optical in vivo measurements with PRIMOS Systems 3D Measuring technology by means of stripe projection.



T0

T7 gg

T14 gg

Figure 3: Clinical test on wrinkles' appearance after 7 and 14 days.

+11.9% hydration

*0.5% Dolcévia



BEAUTEVIA

LSIN 5556

INGREDIENTS	PHASE	%
Aqua	A	to 100
Disodium EDTA		0,10
Glycerin		3,00
DOLCÉVIA® (SINERGA)		0,3
Carbomer	A'	0,40
PHYTOCREAM®2000 (SINERGA)	B	5,00
Caprylic/Capric Trygliceride		3,00
Dicaprylyl Ether		7,00
Olea Europaea(Olive) Oil Unsaponifiables		2,50
Ethylhexyl Methoxycinnamate		2,00
Butyl Methoxydibenzoylmethane		0,50
Lecithin,Tocopherol,Ascorbyl palmitate,Citric acid	B'	0,05
Cyclopentasiloxane (and) Dimethicone/ Vinyl Dimethicone Crosspolymer	C	4,00
Dimethicone		1,00
Preservative	D	q.b.
Sodium Hydroxide		q.b.
Sodium Ascorbyl Phosphate		0,10
Fragrance		0,30

METHOD

Weight phase A and heat at 70°C. Weight phase B, heat at 70°C. Add phase B to A under mixer until homogeneous system. Then add phase C at 50°C. Continue stirring until homogenous system, then cool down to room temperature, weight phase D and mix until homogeneous system.

CHARACTERISTICS

Aspect: Consistent emulsion
Colour: Ivory
Odour: Characteristic
pH: 5,5 - 6,5
Viscosity Brookfield spindle 5 rpm 50: 4.000-6.500 mPa.s

