

# NATIFEEL

Active texturizer



COSMOS APPROVED



## FOCUS INFO

### INCI NAME

Ceratonia Siliqua Gum

### SPECIFICATIONS

Origin: Carob  
 Aspect: fine powder  
 Granulometry: ~200Mesh  
 Color: ivory  
 Odor: characteristic  
 Suggested dosage: 0.5-3%

### PROPERTIES

- 100% natural origin
- Eco-sustainable thermo-mechanic process without additional chemicals
- Confers extraordinary sensoriality (silicon-like effect)
- Easy to add to the formulation

Natifeel is an **active texturizer with 100% natural origin** able to confer to the formulation an extraordinary sensoriality and skin feeling, avoiding the use of synthetic texturizers.

It is supported by efficacy tests assessing its **hydrating, moisturizing, firming and anti-wrinkles** properties, therefore making it an active element of the formula.

It has a high versatility with cosmetic ingredients (it's also non sensitive to electrolytes) and it is stable in a wide pH range, making it suitable to be added in the majority of cosmetic forms.

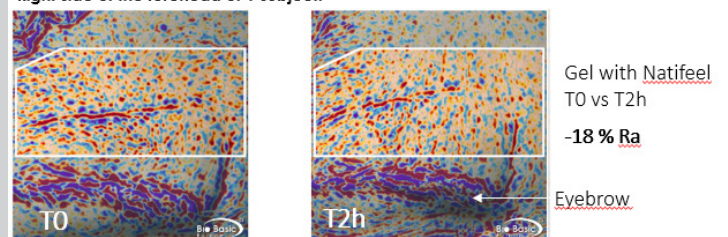
### EFFICACY TESTS

Clinical study on 20 subjects with results after 15 minutes and 2 hours compared to best benchmark as positive control.

1.5% Natifeel achieves the following results after 15':

- **TEWL: -13%**
- **Hydration: +16%**
- **Compactness (R0): +10%**
- **Elasticity (R2): +8%**
- **Roughness (Ra): -6%**

Right side of the forehead of 1 subject:

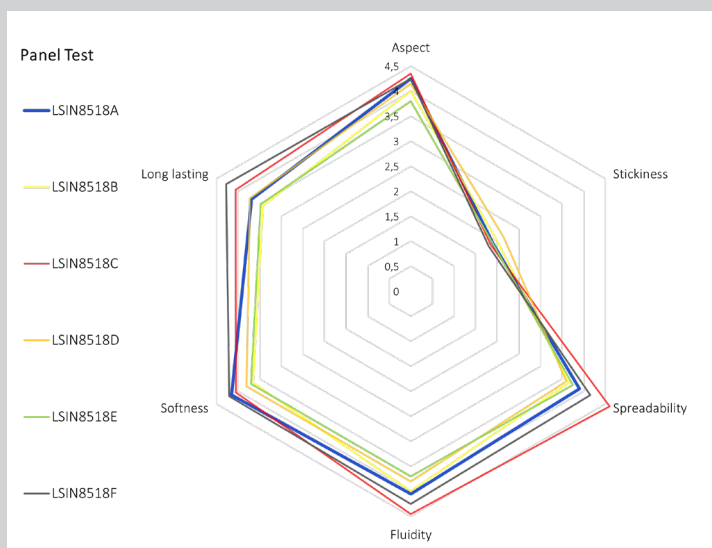


## PANEL TEST

### Sensorial evaluation:

Single-blind panel test to evaluate the sensorial profile of basic formulations based on the following texturisers (both with natural and synthetic origin).

<b>LSIN8518A</b>	<b>Natifeel</b>
<b>LSIN8518B</b>	Tapioca Starch
<b>LSIN8518C</b>	Dimethicone (and) Dimethicone/ Vinyl Dimethicone Crosspolymer
<b>LSIN8518D</b>	Sodium Acrylate/Sodium Acryloyldimethyl Taurate Copolymer (and) C15-19 Alkane (and) Polyglyceryl-6 Laurate (and) Polyglycerin-6
<b>LSIN8518E</b>	Lauroyl lysine
<b>LSIN8518F</b>	Sodium Hyaluronate



The results show that Natifeel has achieved generally better scores than its natural equivalents, and similar or slowly below scores than silicones or Sodium Hyaluronate.

## COCOONING BODY MILK LSIN8709

INGREDIENTS	PHASE	%
<b>SUPREME</b> ((Polyglyceryl-3 Rice Branate, Cetearyl Alcohol, Sucrose Stearate)	A	4.5
Dicaprylyl carbonate		5.00
Coco-Caprylate		5.00
Jojoba oil		1.00
Tocopherol Acetate		0.20
Lecithin, Tocopherol, Ascorbyl palmitate, Citric acid		0.05
Aqua	B	to 100
Glycerin		3.00
Trisodium Ethylenediamine Disuccinate		0.20
Sodium Benzoate		0.40
<b>NATIFEEL</b> (Ceratonina Siliqua Gum)	B'	3.00
Aqua	C	1.00
Potassium Sorbate		0.30
<b>MANDORLAT</b> (Prunus Amygdalus Dulcis Oil, Hydrolyzed Sweet Almond Protein, Potassium Palmitoyl Hydrolyzed Wheat Protein)	D	2.00
Parfum	E	0.70
pH adjuster	F	qb

### CHARACTERISTICS

Aspect: semi-fluid emulsion  
 Colour: white  
 Odour: characteristic  
 pH: 5.0 - 5.5  
 Brookfield Viscosity SP 4 RPM 20: 6000 - 9000 mPas

### METHOD

Weight components of phase A and heat at 70°C. Weight phase B and heat at 80°C, dispersing the rheological under stirring. Add A to B. Cool down, then add sequentially C to E. Adjust pH with F.